

**PRODUCT DATA SHEET**

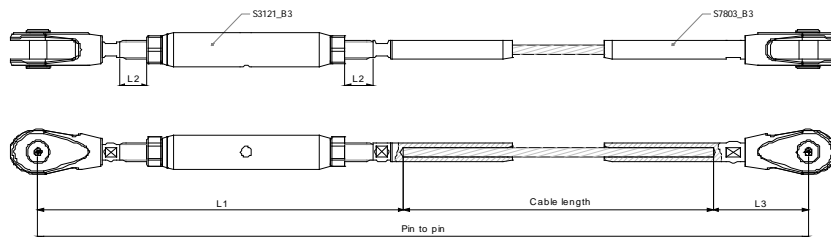


Document No.

**SCS-B32-30M**

**B3 RIGGING SCREW TO FORK**

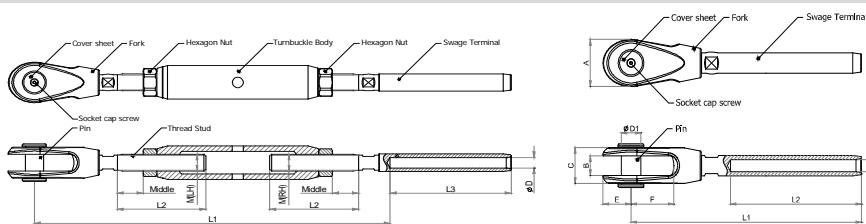
Code	Cable	Limit Tension (kN)	Tensile Load (kN)	Min. Length Pin to Pin	Min. Length Cable	L1	L2	L3	Adj.
SCS-B32-30M	30 mm 1x61	417	695	4,100	2,820	1,030	78	250	± 156



**Mechanical Properties**

Component	Size	Material	Modulus of Elasticity kN/mm <sup>2</sup>	Yield Strength MPa	Tensile Strength MPa	Elongation %
Cable	30mm	AISI316	132 ± 10	-	-	-
Fork/Body/Hexnut	M52	Cast 316 (CF8M)	-	205	485	30
Swage Terminal	M52	Bar316 (262AR)	-	262	515	30
Pin	M52	Bar 316 (Condition S)	-	515	650	25
Cover Sheet	M52	Sheet 316L	-	205	515	40
Socket Cap Screw	M4-M10	316	-	-	-	-

**COMPONENTS**



**B3 Turnbuckle with fork**

Cable	Thread	Pin	ØD	L1	L2	L3	Middle	Adj.	Yield Load (kN)	Tensile Load (kN)
30.0	M52x5	52	33.8	1,030	268	360	78	±156	460	905

**B3 Swage Fork**

Cable	Thread	A	B	C	ØD1	ØD2	E	F	L1	L2	Yield Load (kN)	Tensile Load (kN)
30.0	M52	128	50	90	52	33.8	80	100	610	360	460	905

NOTE: All dimensions in millimeters (mm) unless otherwise stated  
 Structural Cable System (SCS) Range: SCS4 - B3  
 TAP no. : ST19.5